

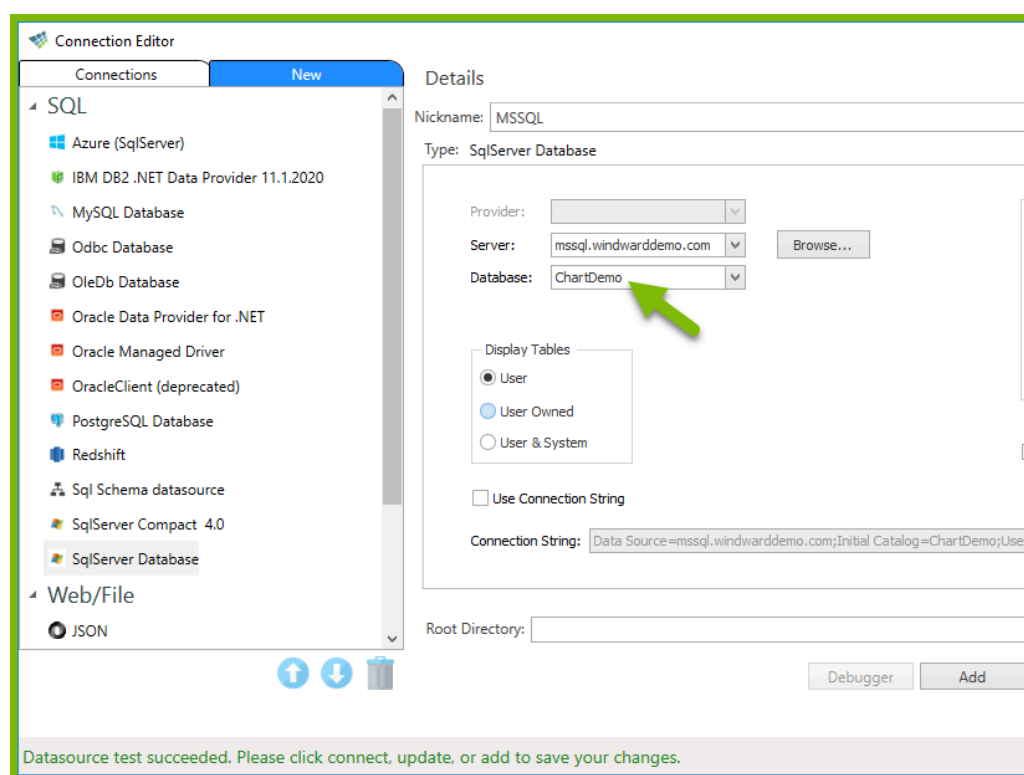
# How Do I Use a Chart Tag?

Use the Chart Tag to insert a chart into your Report Template's output.

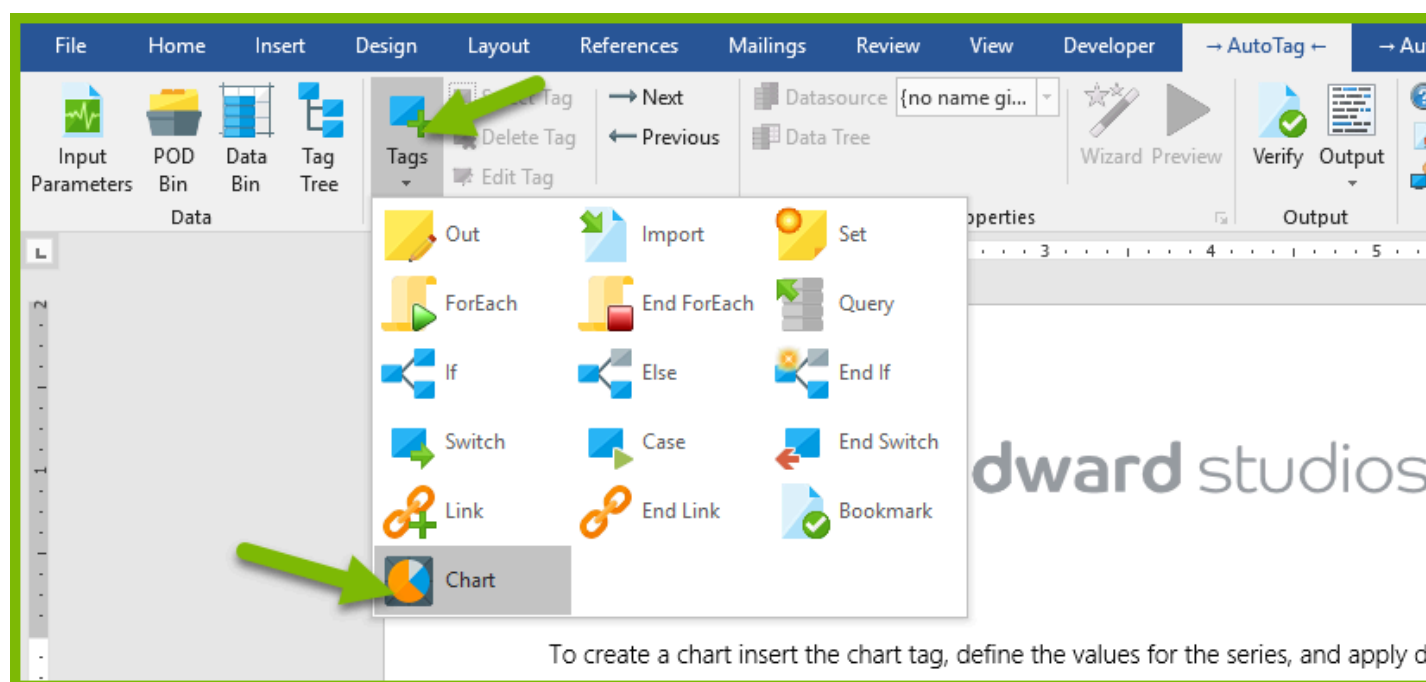
In this article we'll create a simple Chart Tag, connect it to a data source, then select the data to be displayed by the Chart Tag in the Report Template's output.

For more details about the Chart Tag, see the [Chart Tag Reference](#).

Open a new Word document, then connect to the ChartDemo database in our public mssql.windwarddemo.com data source. If you're unfamiliar with connecting to a SQL Server data source, see [How Do I Connect to Microsoft SQL Server?](#)

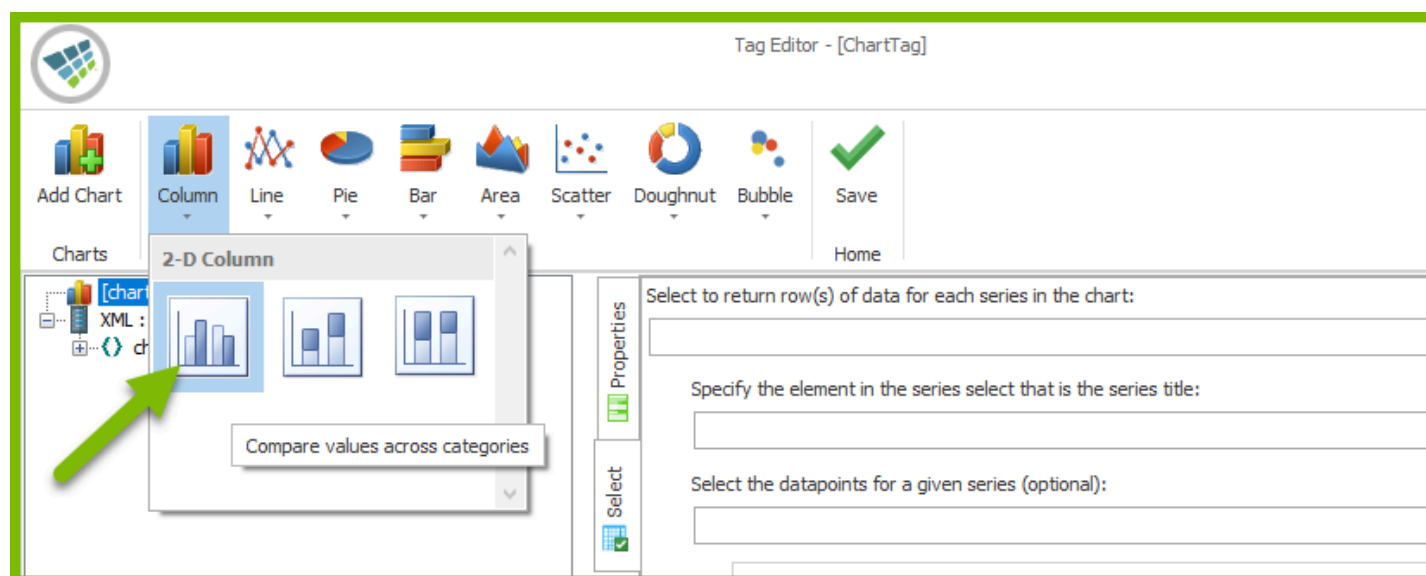


Click on the Tags button in the AutoTag ribbon, then select the Chart Tag:

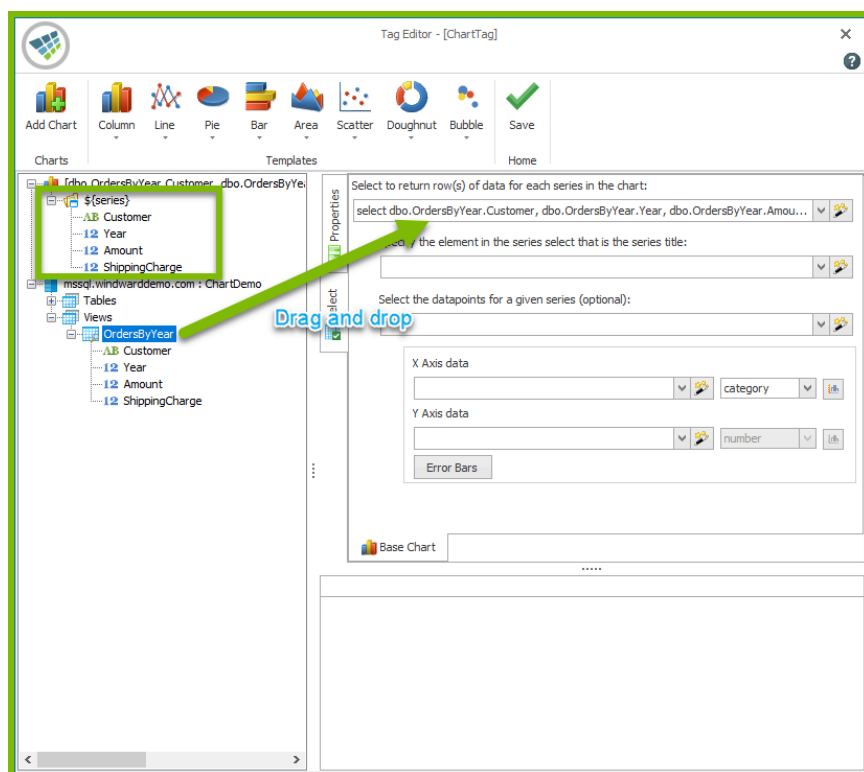


Double-click on the Chart Tag to bring up the Chart Tag Editor.

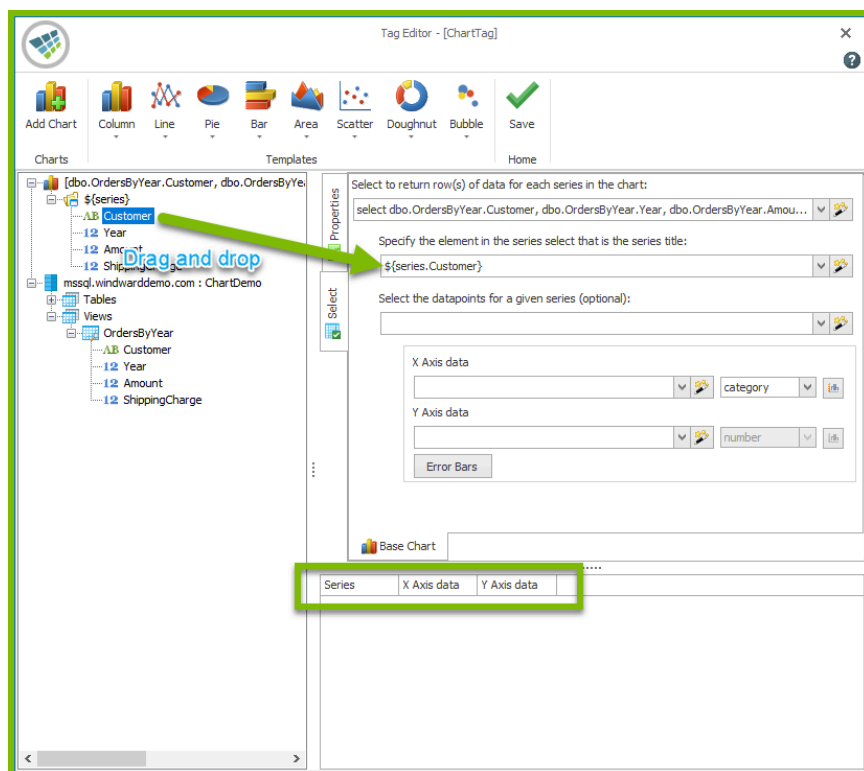
We wish to create a column chart of the yearly sales to several customers. First, in the Top Bar select the Column chart type:



In this example, the data we wish to display, like customer, sales amount and year, are in the OrdersByYear view in the Data Pane. Drag and drop the OrdersByYear view onto the "Select to return row(s)..." field at the top of the Select Pane to select the data. Note that a new "\${series}" variable appears in the data tree in the Data Pane. We can use that variable to refer to the data we just selected in other queries in the Select Pane.



Now we will choose the names of the data series that will appear in the chart's legend. Let's choose customer names by dragging and dropping the Customer node in the Data Pane onto the "Specify the element in the series..." field in the Select Pane. Note the change in the Results Pane.



We'll plot the years of sales to customers against the X-axis. To do so, drag and drop the Year node from the `${series}` data tree onto the "X Axis data" field. Note the change in the Results Pane.

Tag Editor - [ChartTag]

Select to return row(s) of data for each series in the chart:  
 select dbo.OrdersByYear.Customer, dbo.OrdersByYear.Year, dbo.OrdersByYear.Amou...

Specify the element in the series select that is the series title:  
 \${series.Customer}

Select the datapoints for a given series (optional):

X Axis data  
 \${series.Year} category

Y Axis data  
 number

Error Bars

Base Chart

Series	X Axis data	Y Axis data
Banzai	2007	
Banzai	2008	
Banzai	2009	
Banzai	2010	
Banzai	2011	
Ed	2007	
Ed	2008	
Ed	2009	

Next, we'll plot the amounts of sales against the Y-axis. Drag and drop the Amount node from the `${series}` data tree onto the "Y Axis data" field. Note the change in the Results Pane.

Tag Editor - [ChartTag]

Select to return row(s) of data for each series in the chart:  
 select dbo.OrdersByYear.Customer, dbo.OrdersByYear.Year, dbo.OrdersByYear.Amou...

Specify the element in the series select that is the series title:  
 \${series.Customer}

Select the datapoints for a given series (optional):

X Axis data  
 \${series.Year} category

Y Axis data  
 \${series.Amount} number

Error Bars

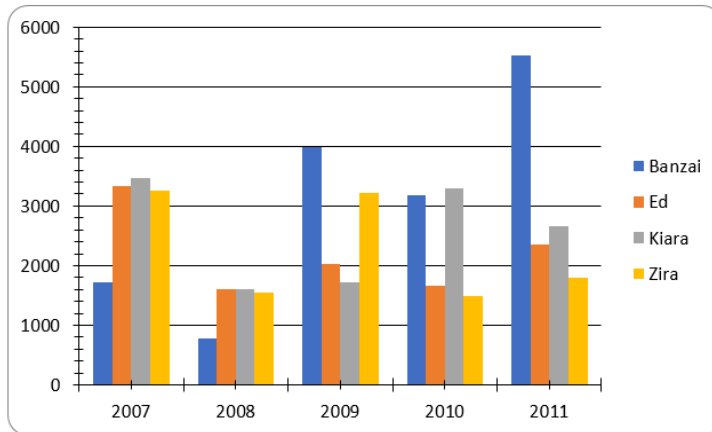
Base Chart

Series	X Axis data	Y Axis data
Banzai	2007	1715.64
Banzai	2008	774.68
Banzai	2009	3991.49
Banzai	2010	3178
Banzai	2011	5530.49
Ed	2007	3339
Ed	2008	1609
Ed	2009	2035.24

We're done! Now click on Save in the Top Bar to save the Chart Tag. Generate output from your template, and you will see the output from your first Chart Tag.



Column chart: Yearly sales comparison among several companies



Attached below is the template used for this example.



[Chart\\_Example\\_Template.docx](#)