

# Creating a Template in PowerPoint with JSON Data

## Training Guide

### Welcome to Windward Designer

Windward Studios takes a unique approach to reporting. Our Report Designer sits directly inside Microsoft Office which means you get to use a **familiar and powerful tool** without having to learn a new designer. If you've ever used one of our competitors' products, you may be familiar with their modular designers that require you to build reports using bits and pieces, where every bit of text or every piece of data is a distinct object in your template. Windward changes all of that. With Windward in Microsoft Office, you **design report templates just like you design any other document**, utilizing Tags to insert your data wherever you need it seamlessly in-line with your other text and content.

### Training Overview

This Training Guide walks you through the fundamental steps you need to begin designing templates with Windward Designer in Microsoft PowerPoint using a JSON Datasource.

The Four Steps to Windward:

1. [Install](#)
2. [Connect to data](#)
3. [Design your template & insert your data](#)
4. [Output](#)

### Step 1 - Install

To get started, you need to install the Designer. If you have it already installed, please skip this step!

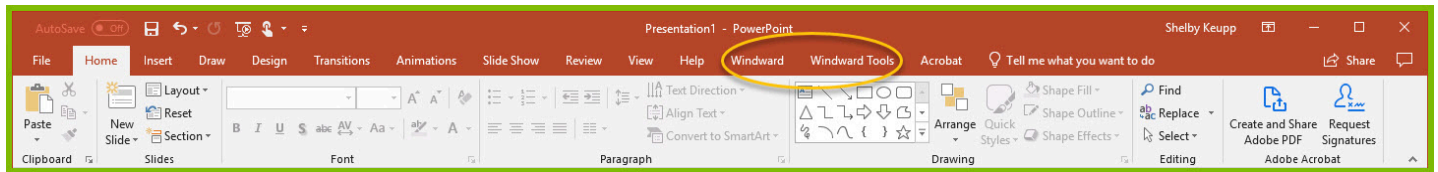
If you already have a license key, please visit the [downloads page](#) to install the software.

Or start a [free 14-day trial!](#)

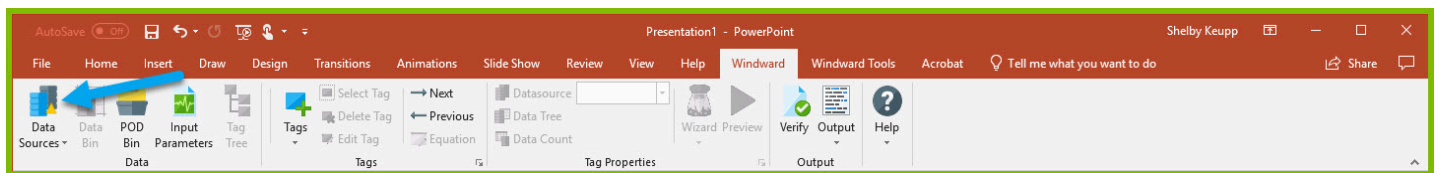
### Step 2 - Connect to Data

In this training guide, you are connecting to a sample JSON Datasource provided by Windward. **To connect to the sample data:**

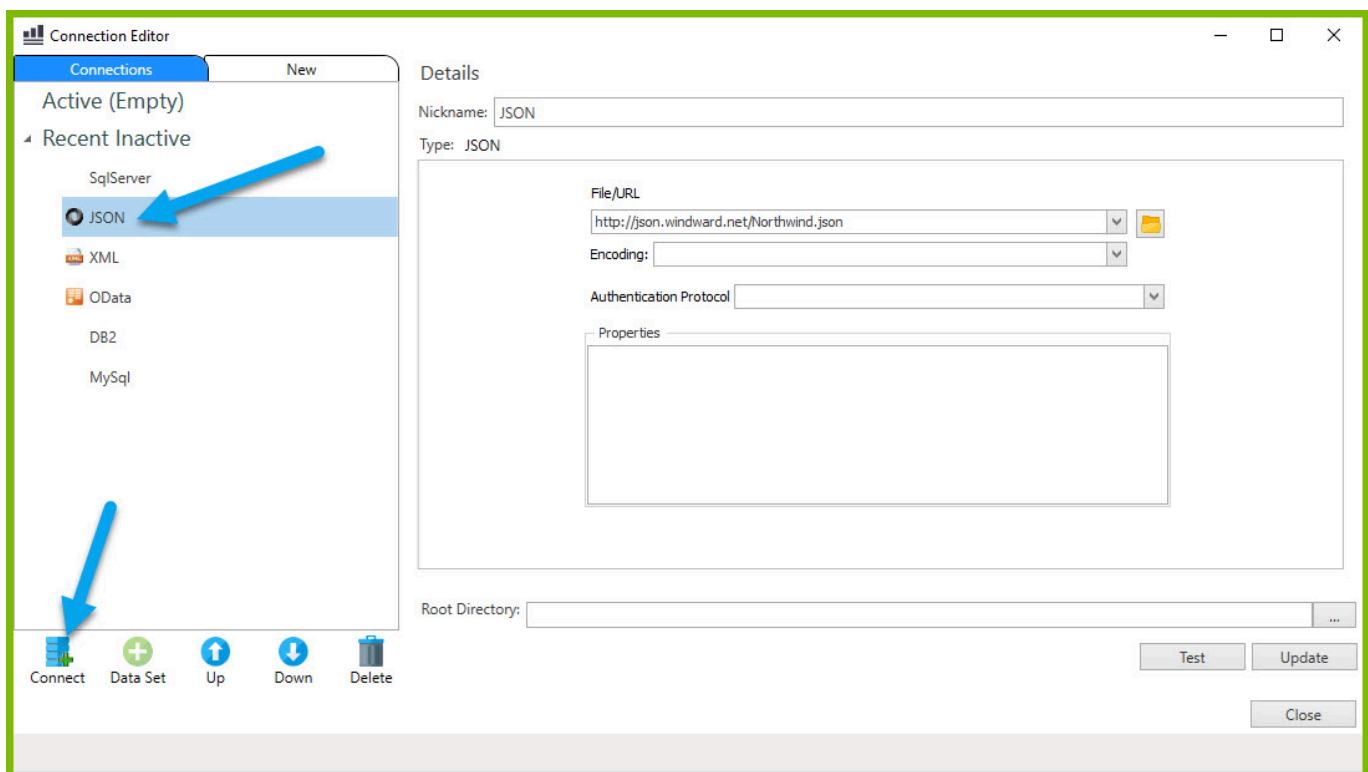
1. Open Microsoft PowerPoint. Now that you've installed Windward Designer, you will see two new tabs in the Microsoft Office Ribbon – the **“Windward”** Tab and the **“Windward Tools”** Tab.



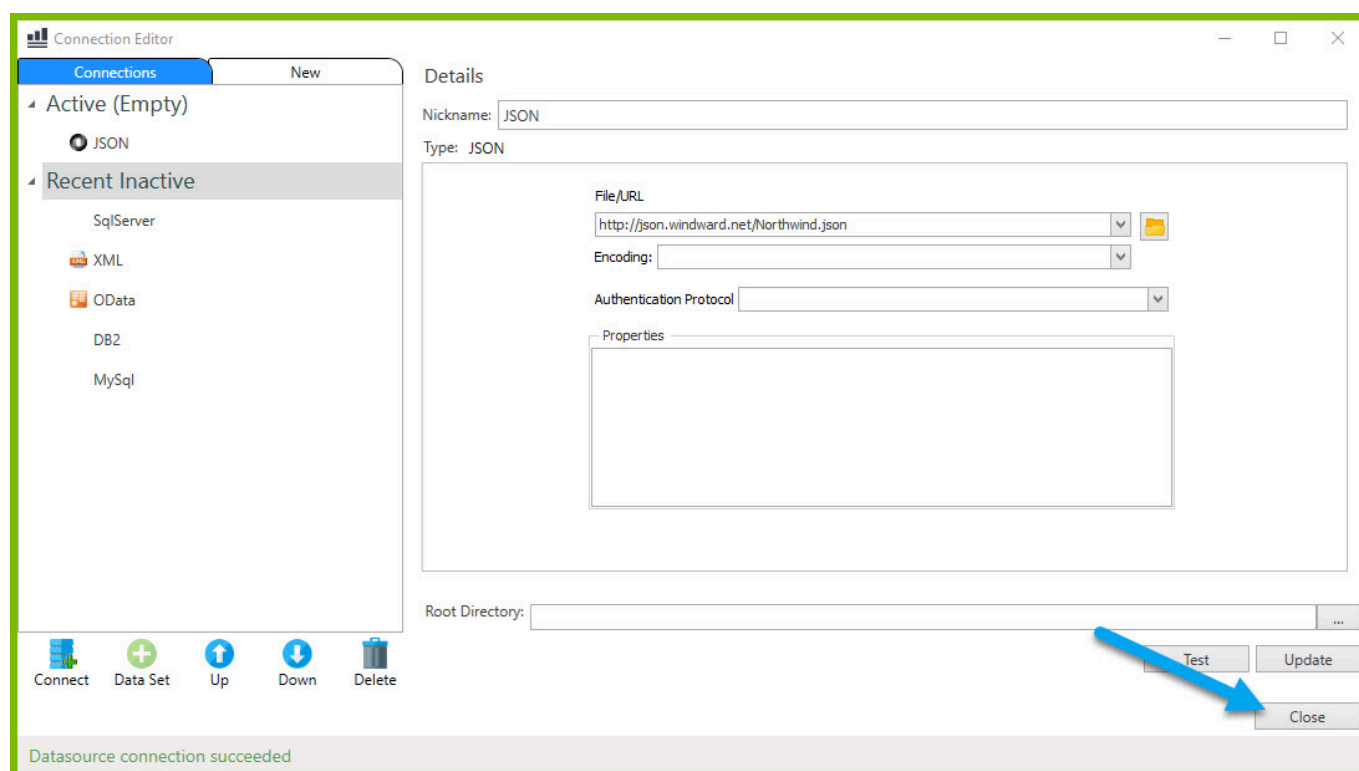
2. Click on the **“Windward”** Tab and click on the **“Data Sources”** button located on the left-hand side of the ribbon. This opens the Connection Editor where you will manage all your data connections. (Alternatively, you can click on the lower half of the button to expand the drop down and then click **“Data Sources.”**)



3. In the Connection Editor window, select the data connection labeled **“JSON”** under **“Recent Inactive”** and click the **“Connect”** button.



4. Close the Connection Editor by clicking **“Close.”** You have now successfully connected to the sample data!



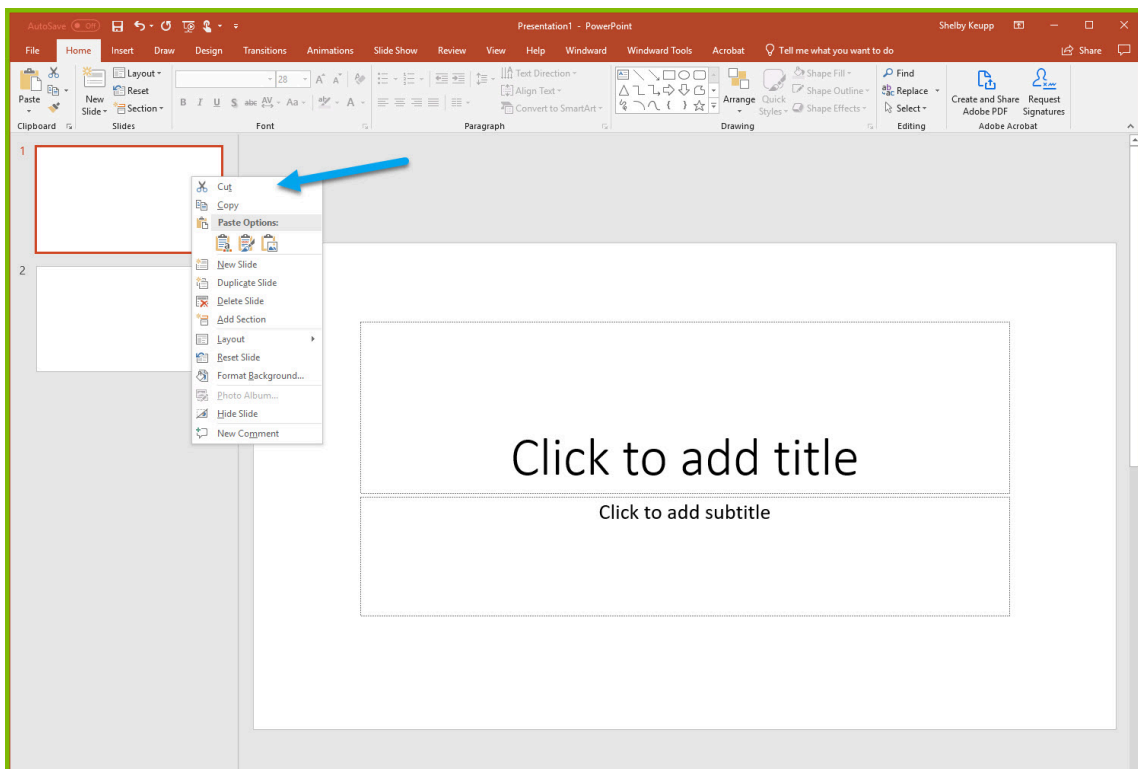
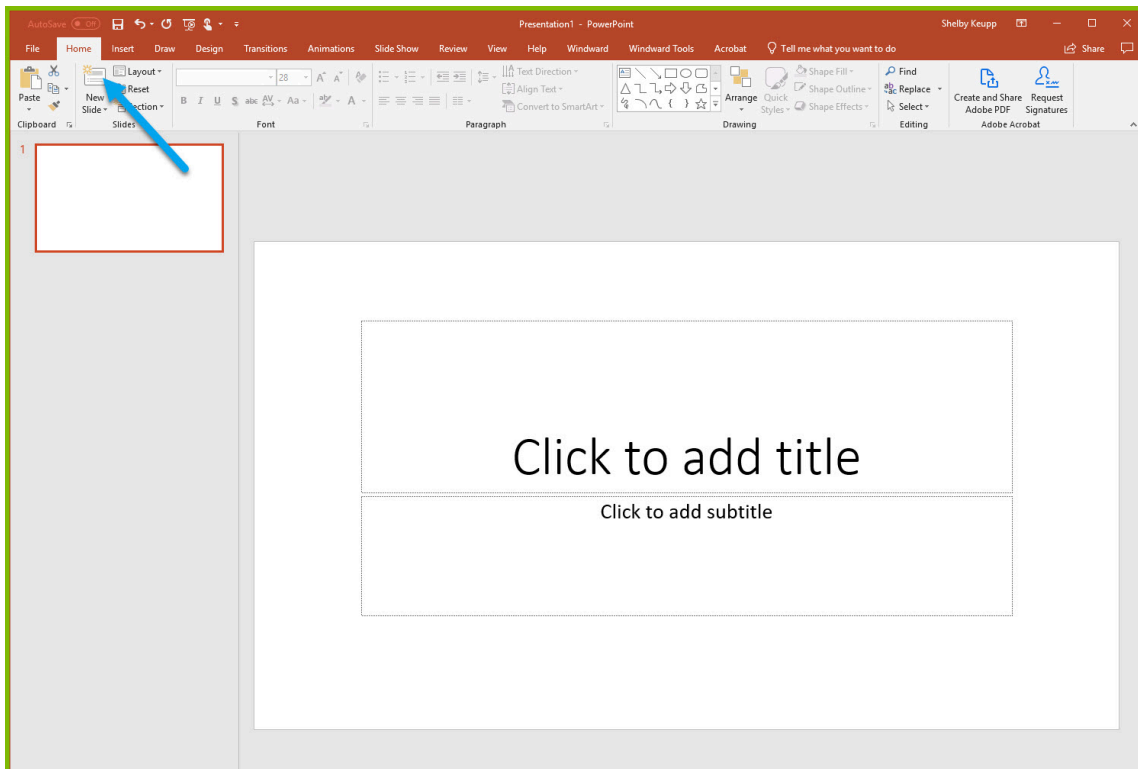
## Step 3 - Design Your Template & Insert Your Data

In this training guide, you will build a very basic template to get the feel of Windward Designer. While your final product may not seem very impressive, you will learn the basic skills to making any template! You will make a template which will output the product name and unit price for every product in the sample data, with each product separated by a new slide.

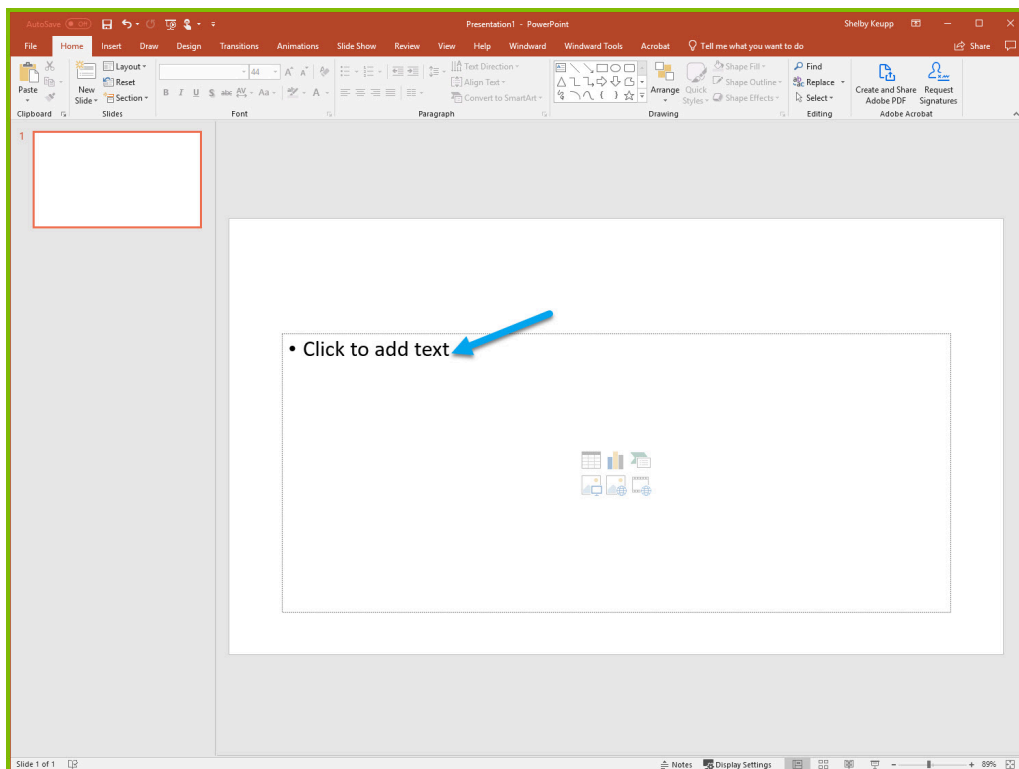
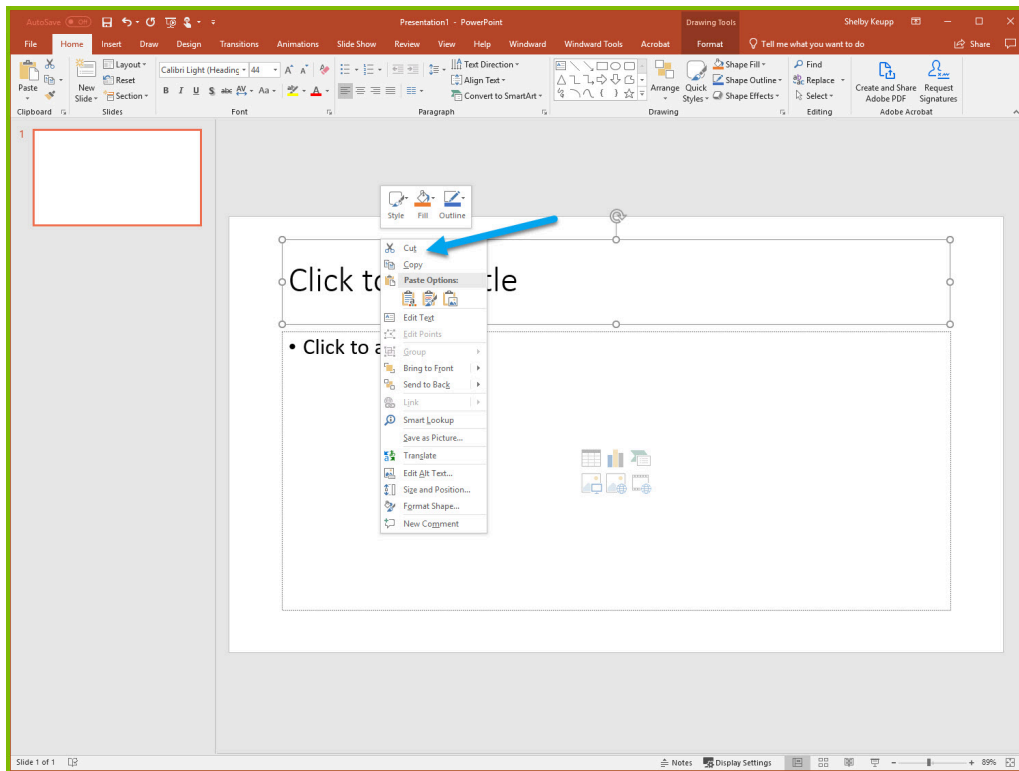
In situations where you want to output many records returned from a select, you can use a **ForEach** tag. The **ForEach** tag will generate output once for each record returned by its select. The **ForEach** tag itself will not insert data into the template, but rather stores data in a variable that can be used by other tags to generate output.

For this example, we will use a new **"Title and Content"** template.

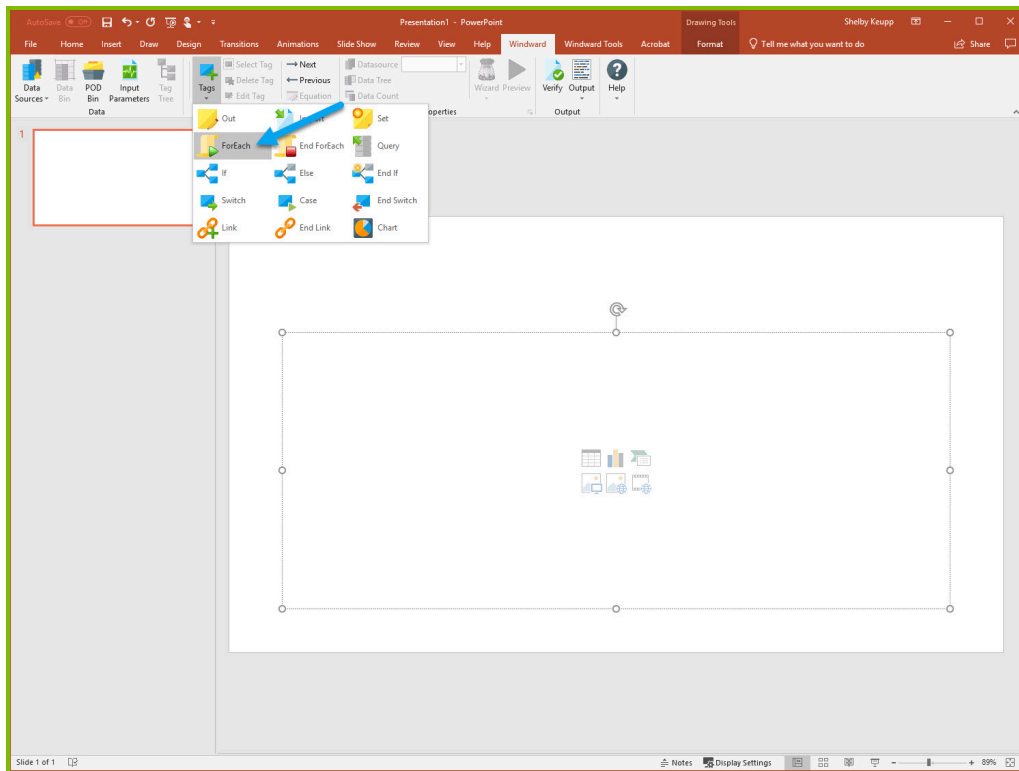
1. Click on the **"New Slide"** button to create a new slide, then delete the original Title slide.



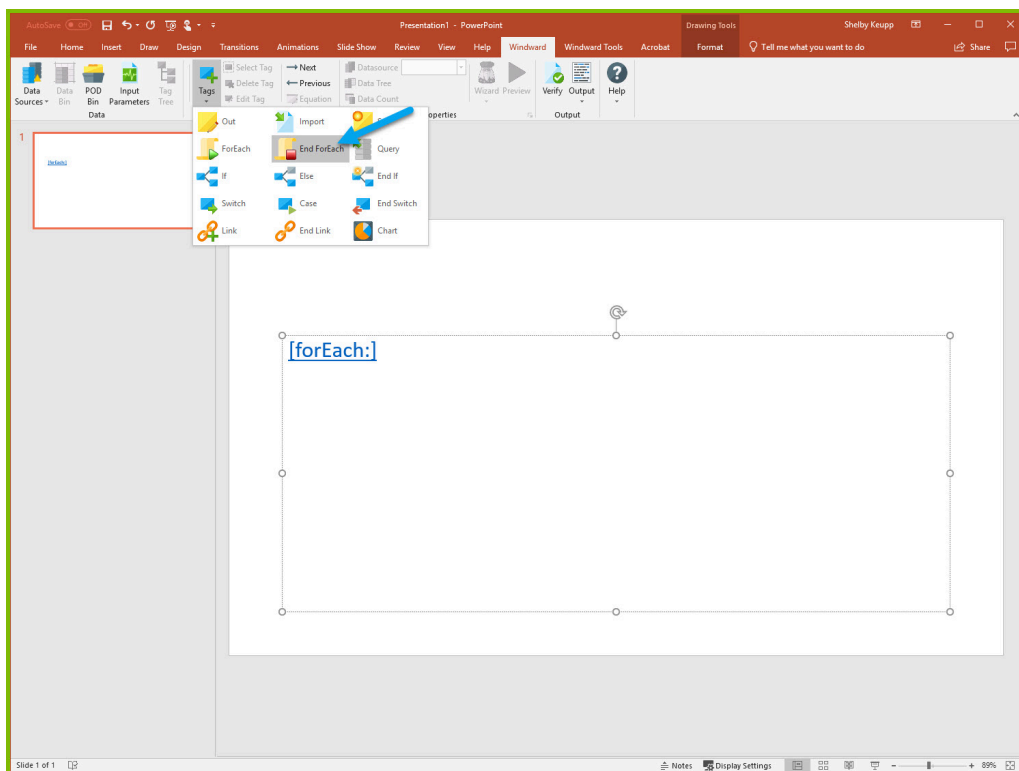
2. Click on the top text box that is labelled “**Click to add title**”, then press Delete to remove the extra text box. Now click inside the remaining text box and hit the backspace button to delete the bullet point.



3. To place a ForEach tag, expand the drop down under the button “**Tags**” in the Windward ribbon and click “**ForEach**.”

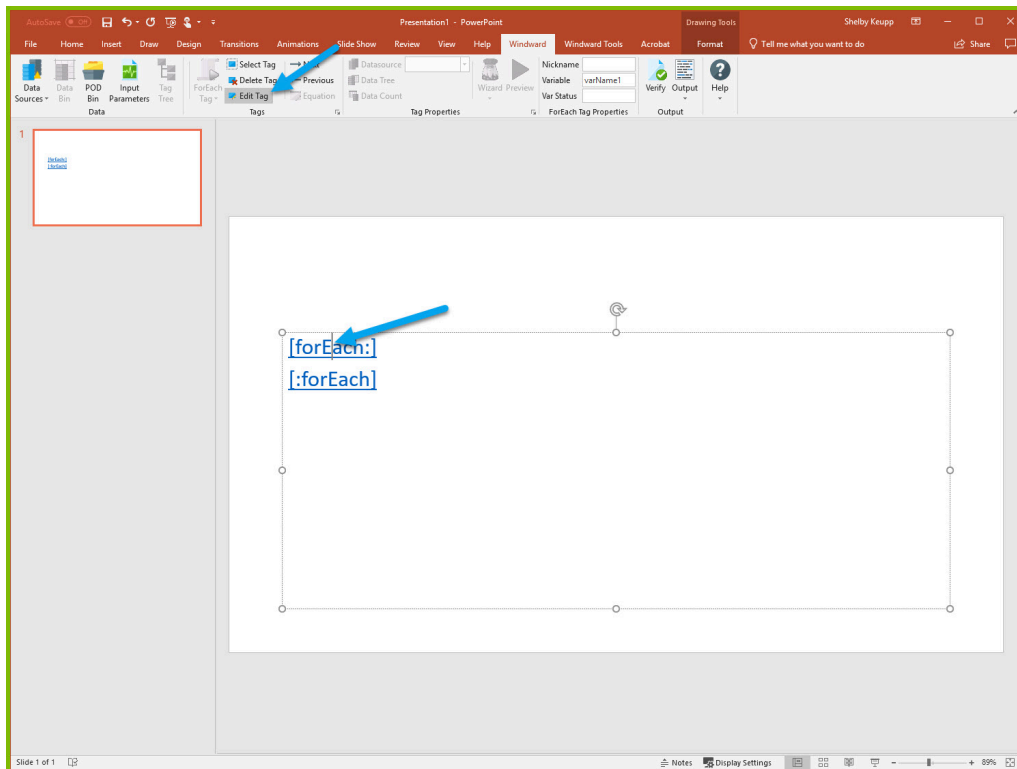


4. Click enter to move to a new line, expand the drop down under the button “**Tags**” in the Windward ribbon, and click “**EndForEach**” to place a closing tag for the ForEach tag.

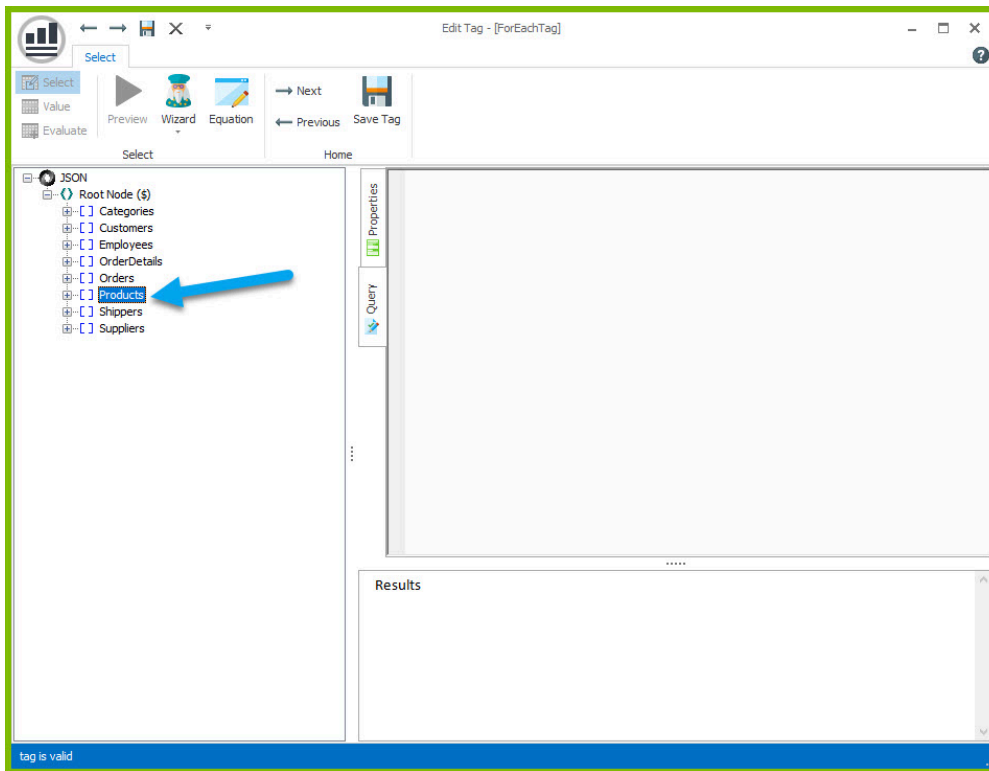


Now all the content that you place between the ForEach and EndForEach tags will be generated once for each record returned by the ForEach tag's select

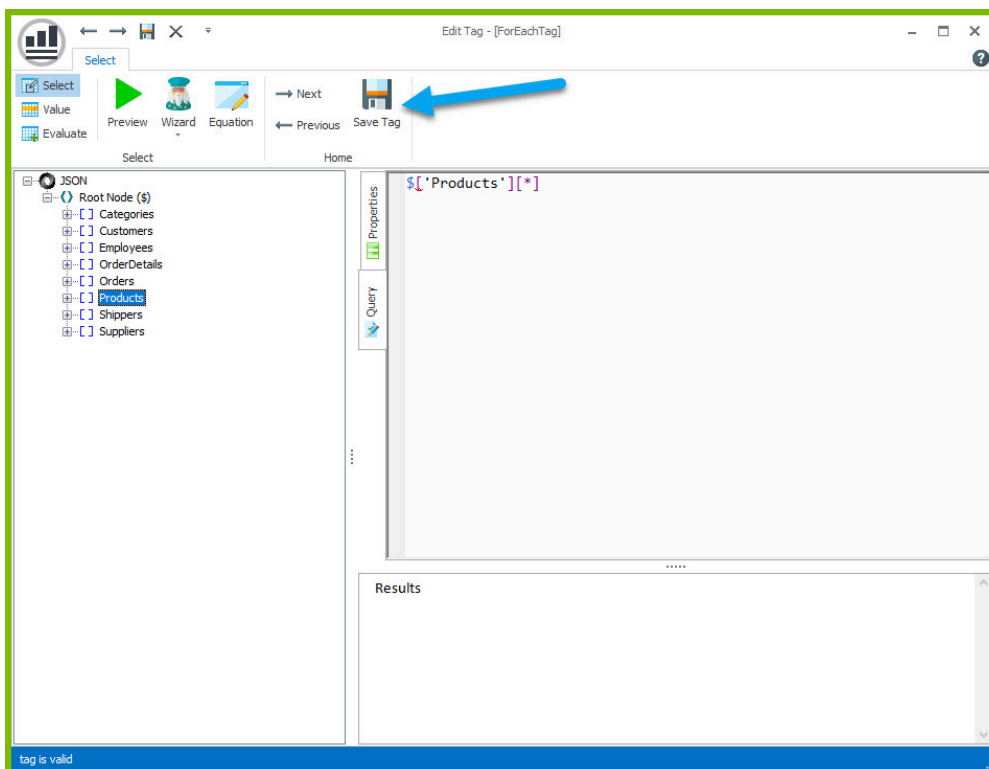
5. For the ForEach tag, you will select the Product table so that you can output information on each product. You can use the Tag Editor to easily create a query for your tag. Place your cursor on the “[forEach:]” tag that was inserted in your template and click the **“Edit Tag”** button in the Windward ribbon to open the Tag Editor.



6. In the Tag Tree, expand the node JSON -> Root Node (\$) and double-click the **“Products”** node. This will automatically write a select for the Products node.

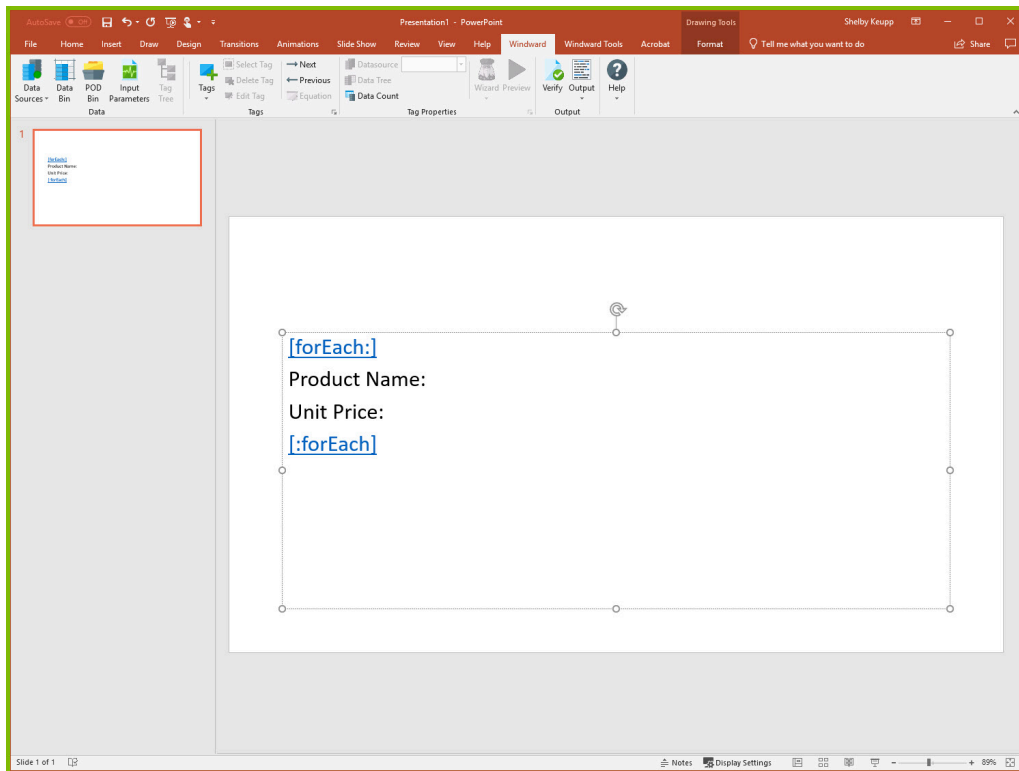


7. Click the **“Save Tag”** button. Congratulations! You have just inserted your first tag into your template!



8. On a new line after the ForEach tag, enter the text “Product Name:” and on the next line “Unit Price:”.

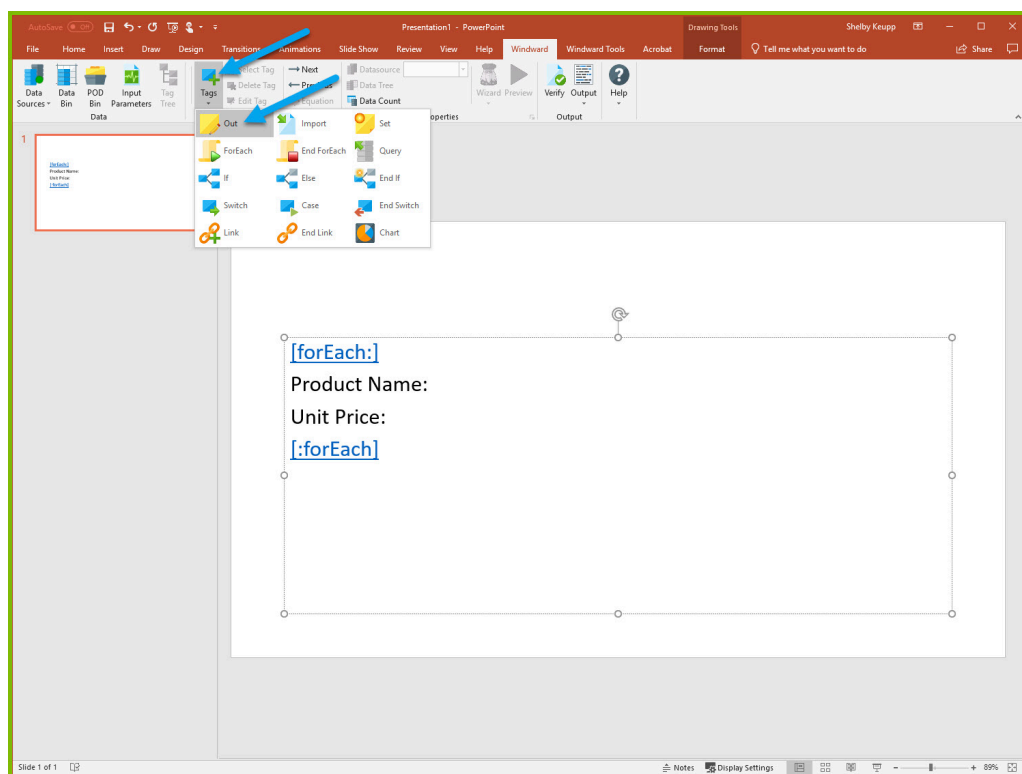




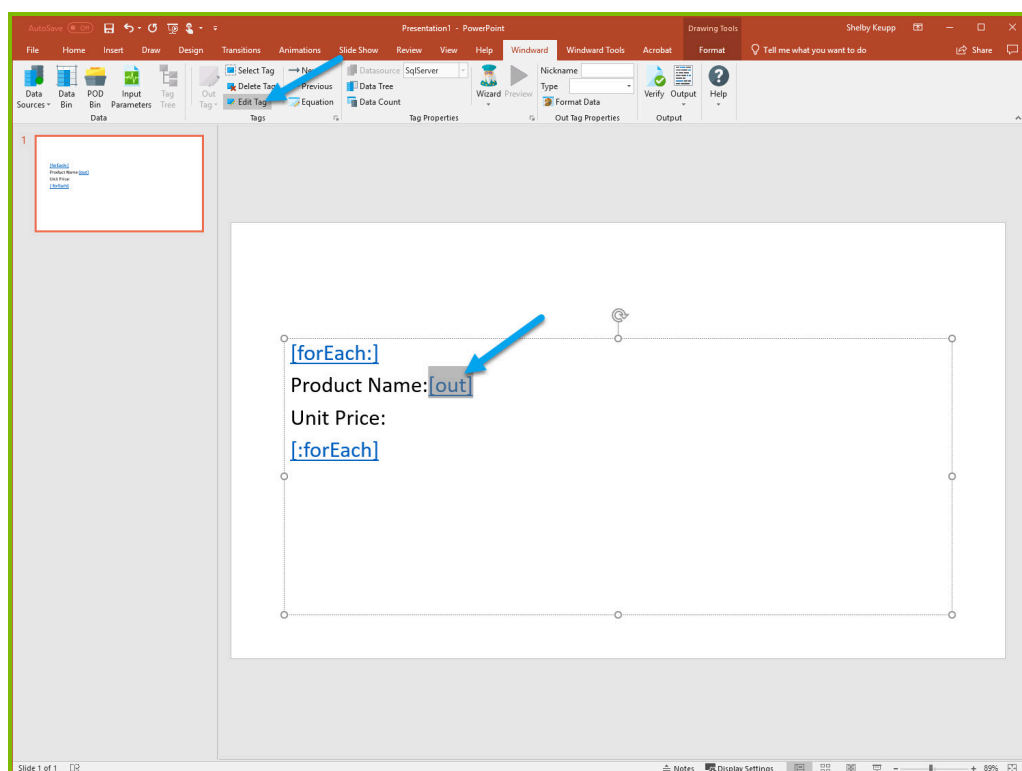
The “Product Name” and “Unit Price” text will be output for every product returned by your ForEach tag’s select.

Out tags will be used to insert data into your final report. These tags will output the Product Name and Unit Price for each product after these labels.

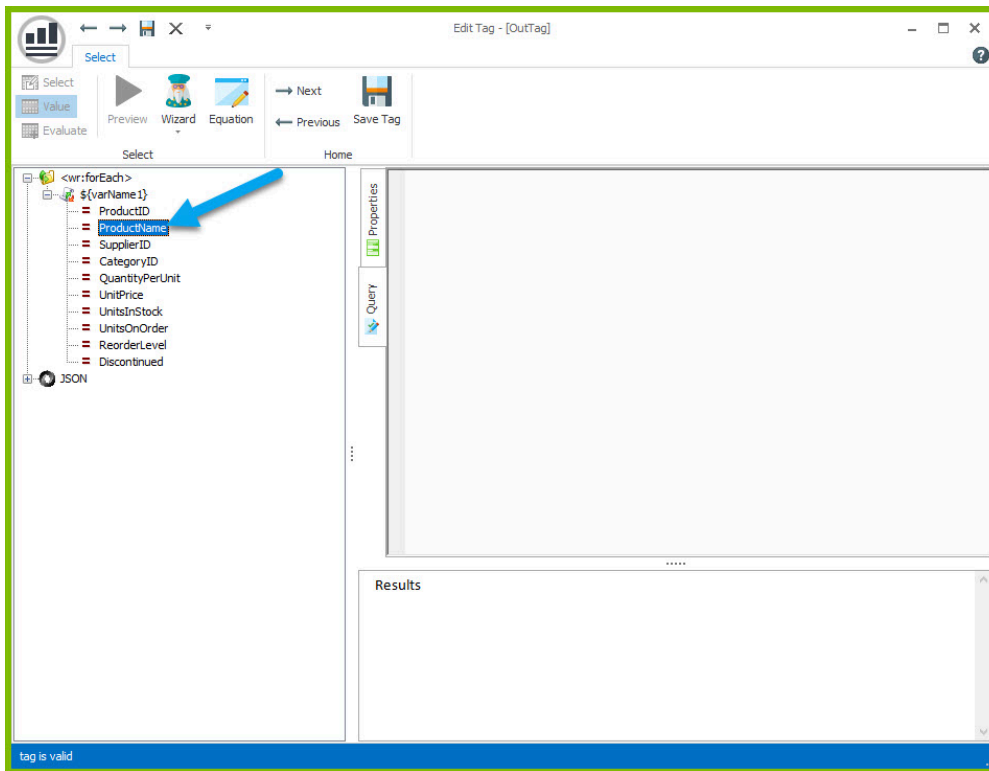
9. Place your cursor after the “Product Name:” text, click **“Tags”** in the Windward ribbon, and click **“Out.”** This places an Out tag at the location of the cursor.



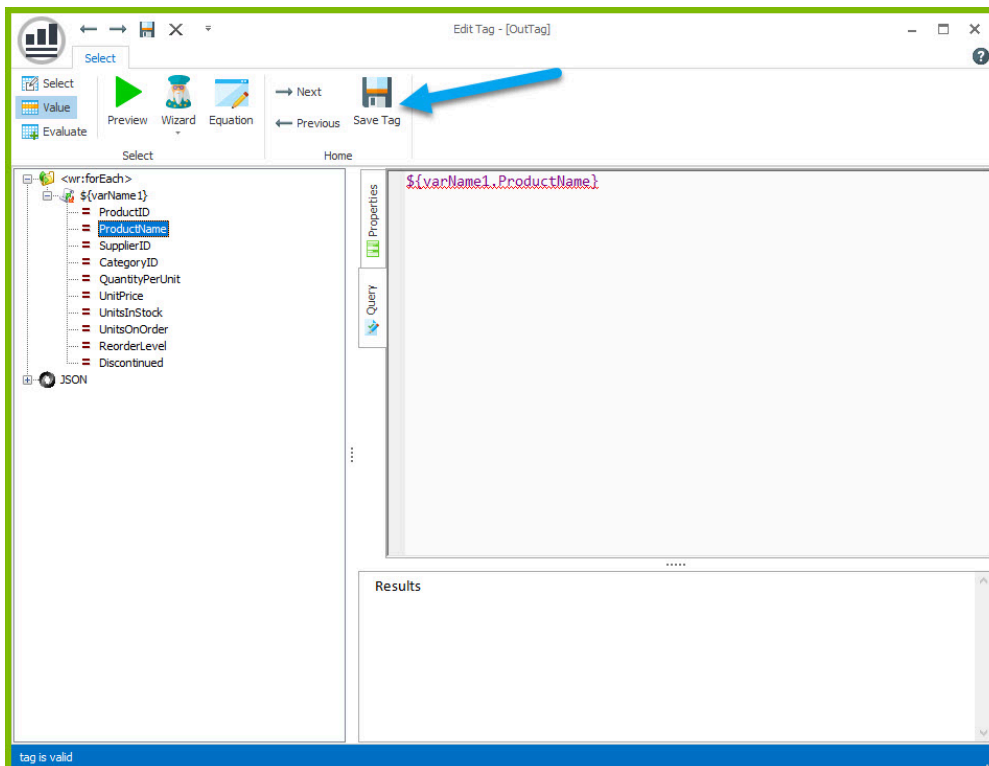
10. Open the tag Editor by placing your cursor on the Out tag and clicking **"Edit Tag."**



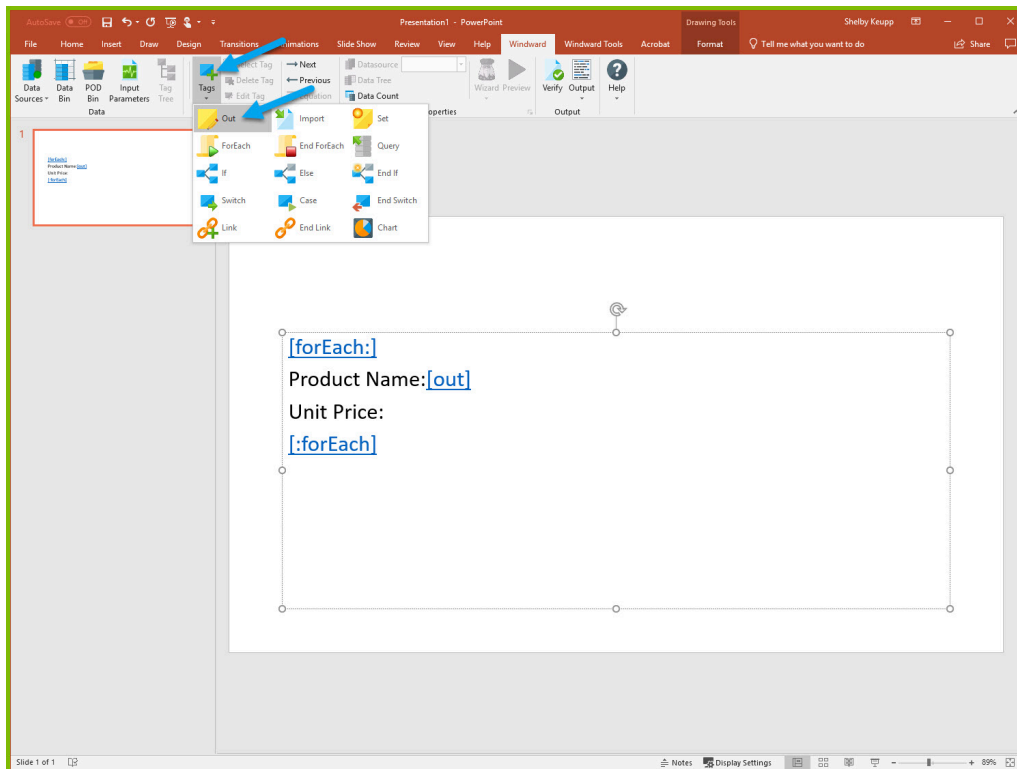
11. You can now see your ForEach variable in the tag editor since the Out tag occurs in the template between the ForEach tag and the EndForEach tag. In the Tag Tree, expand `<wr:forEach> -> varName1` and double-click **"ProductName."** This automatically queries the ProductName currently held by the ForEach variable.



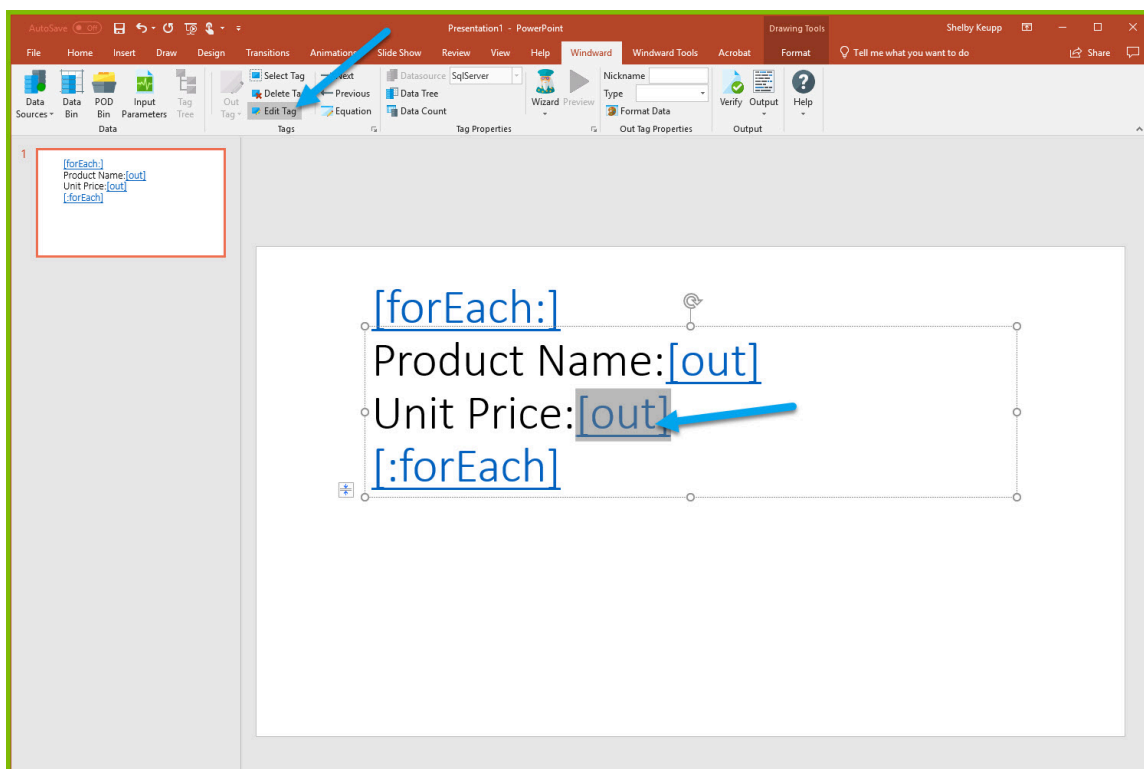
12. Click **“Save Tag”** button to save your tag's query.



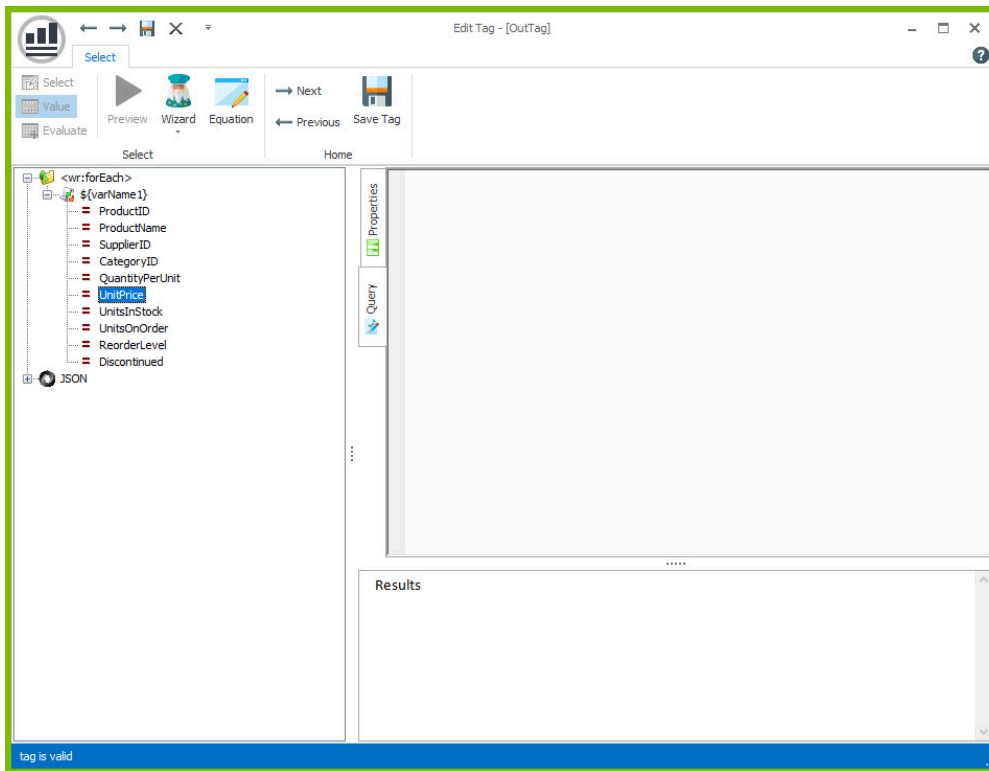
13. Place your cursor after the “Unit Price:” text and click “Tags” in the Windward ribbon and click **“Out.”** This places an out tag at the location of the cursor.



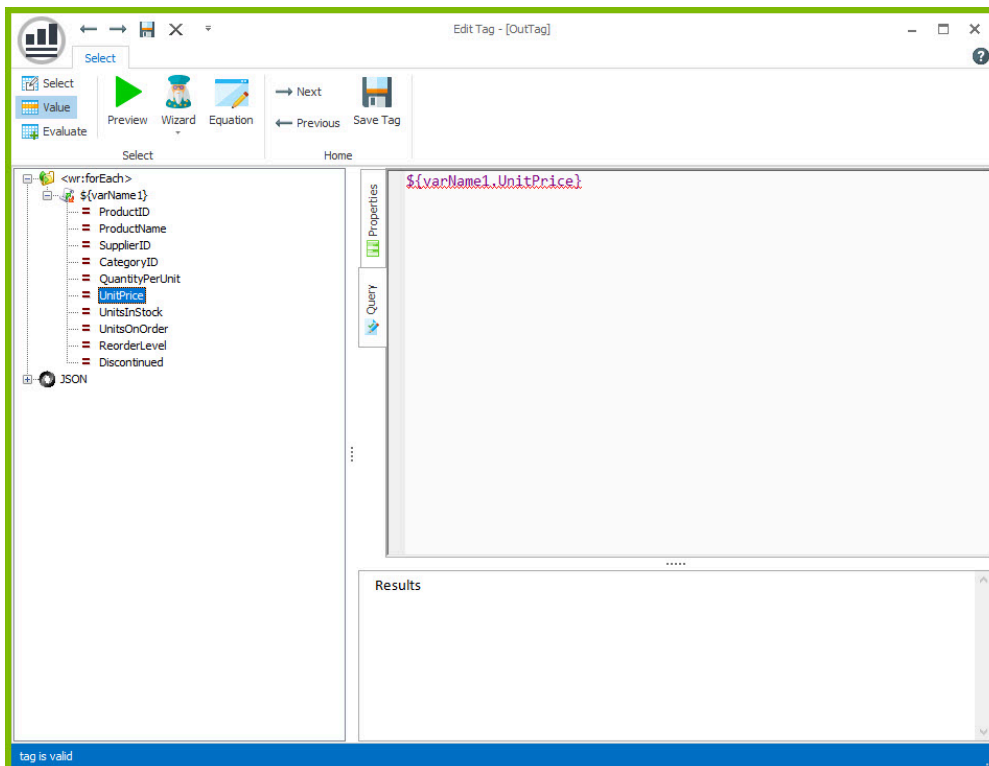
14. Open the tag Editor by placing your cursor on the Out tag and clicking **"Edit Tag."**



15. You can now see your ForEach variable in the tag editor since the Out tag occurs in the template between the ForEach tag and the EndForEach tag. Expand <wr:forEach> -> varName1 and double click UnitPrice. This automatically queries the UnitPrice currently held by the ForEach tag.

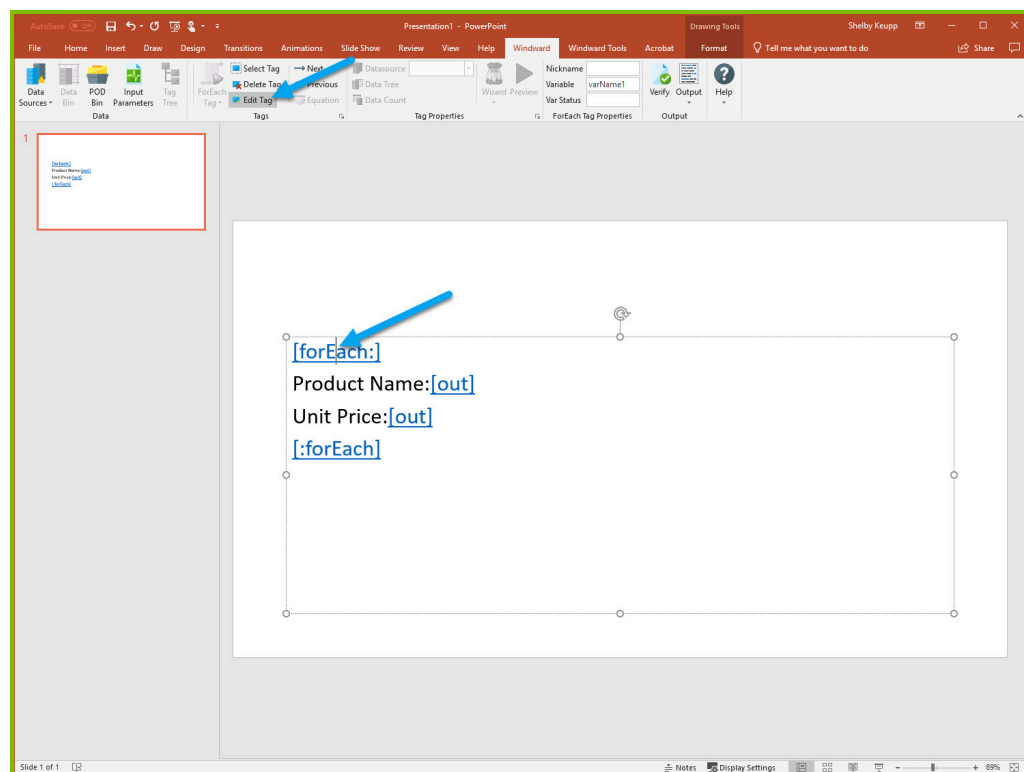


16. Click the **“Save Tag”** button to save your tag's query.

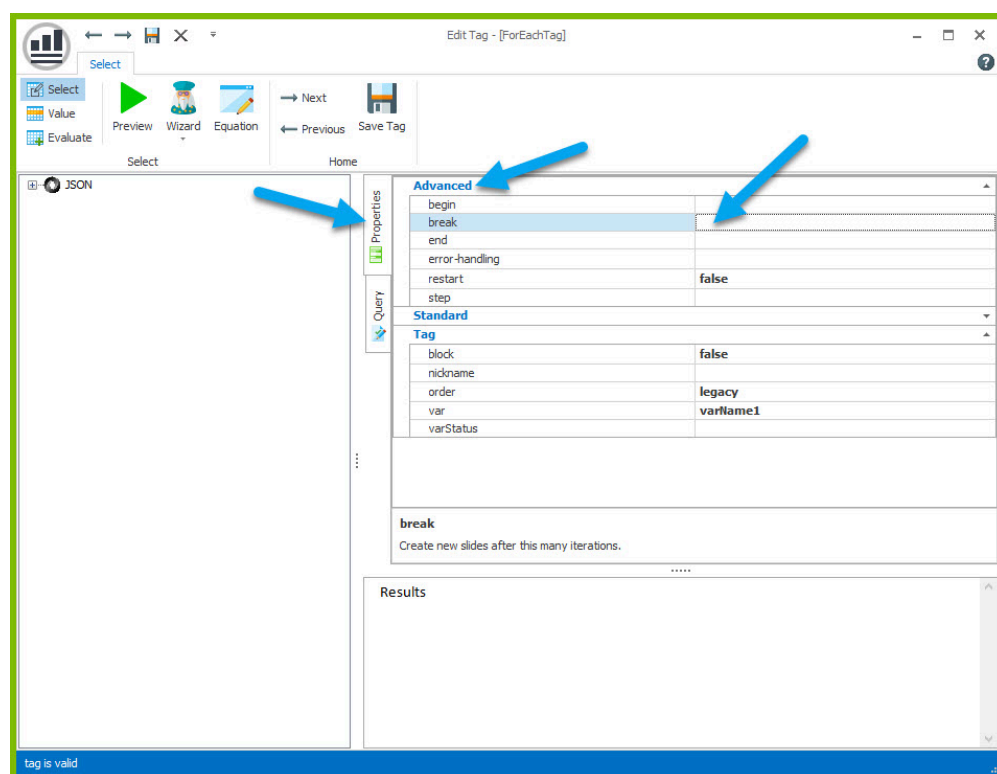


Finally, you are going to add some indicator between each product, so you can easily distinguish between them in your output. Each output will be on its own slide.

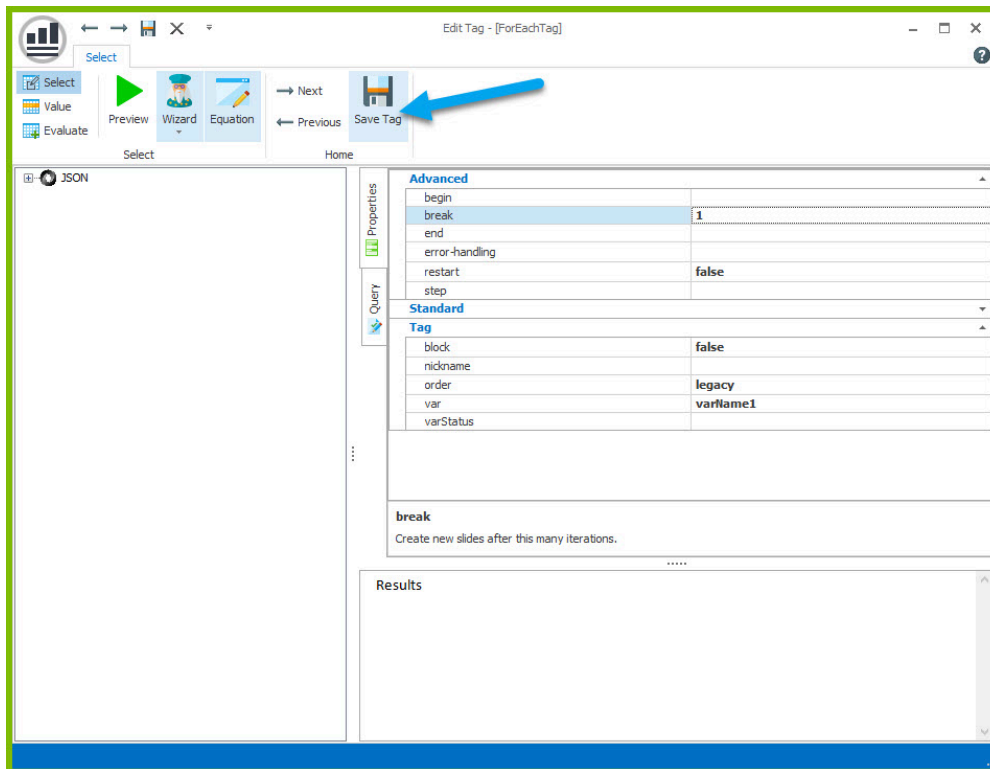
17. Place your cursor on the “[forEach:]” tag that was inserted in your template and click the “Edit Tag” button in the Windward ribbon to open the Tag Editor.



18. To separate each output by a new slide, select the Properties pane in the Tag Editor. Open the drop down menu for the “Advanced” tab and set the break value to 1.



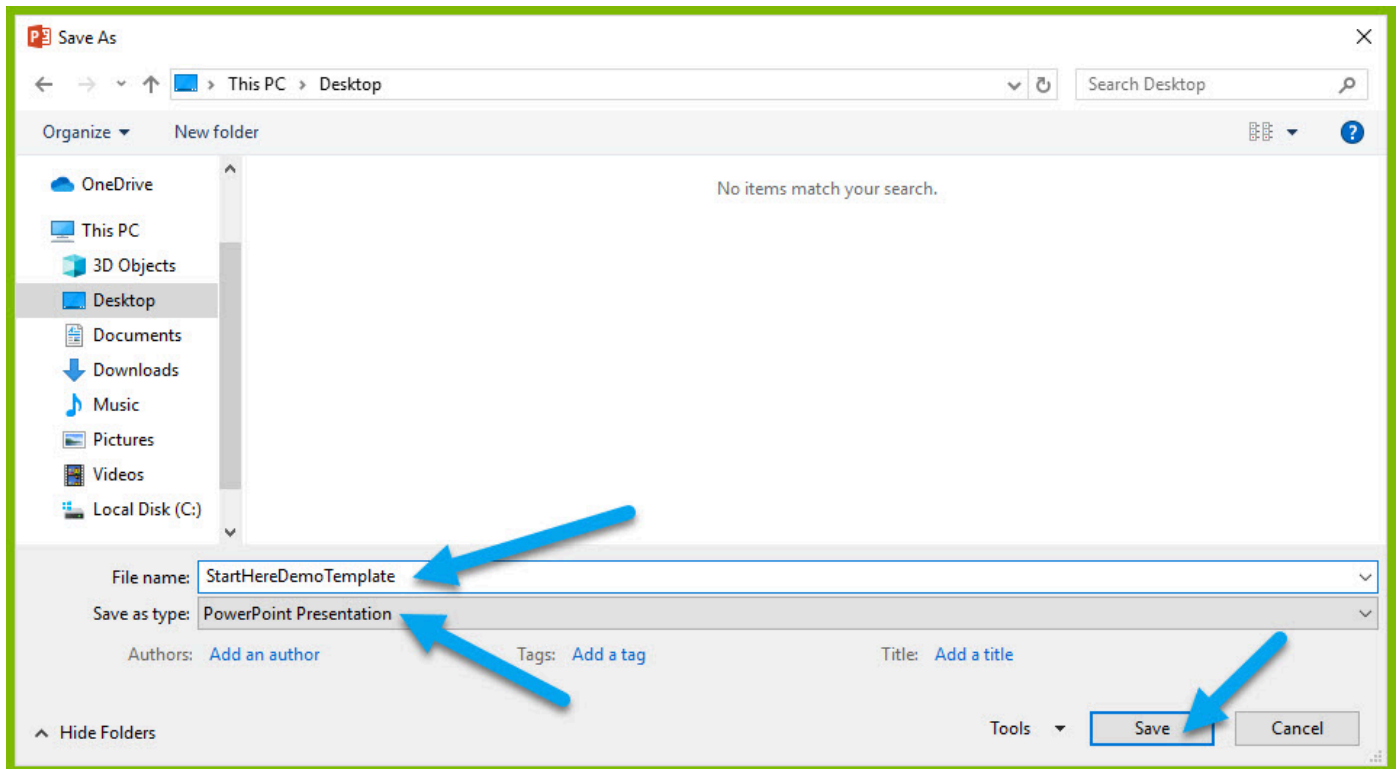
19. Click “Save Tag” button to save your tag's query.



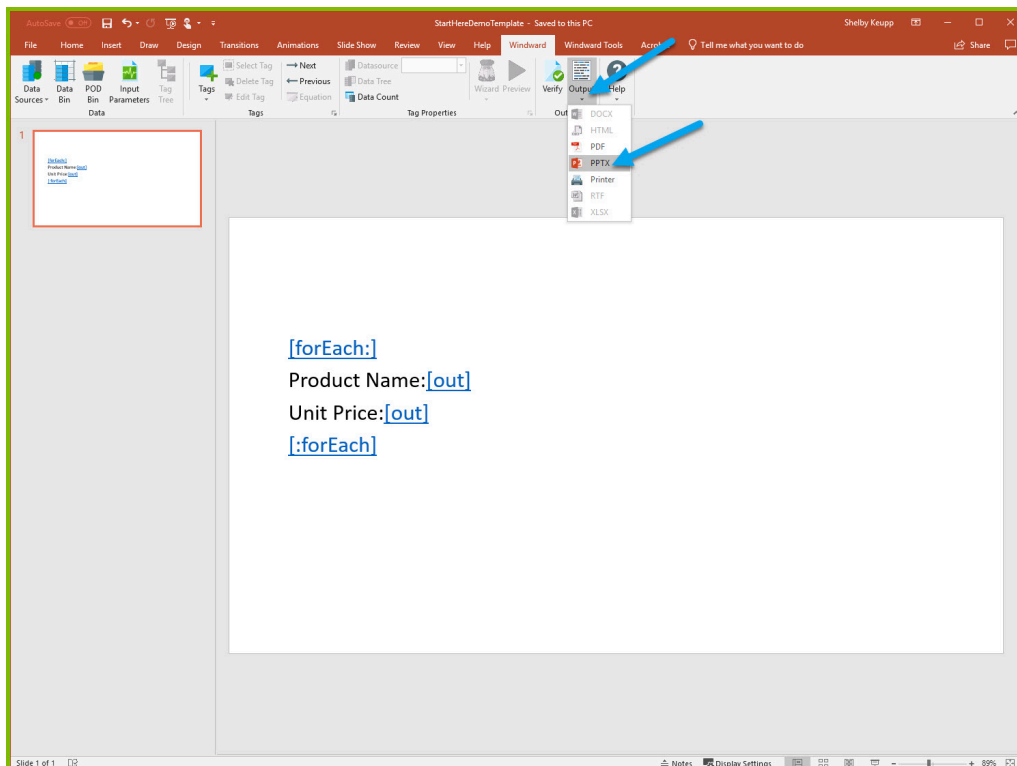
Now you are all finished with your template design!

## Step 4 - Output

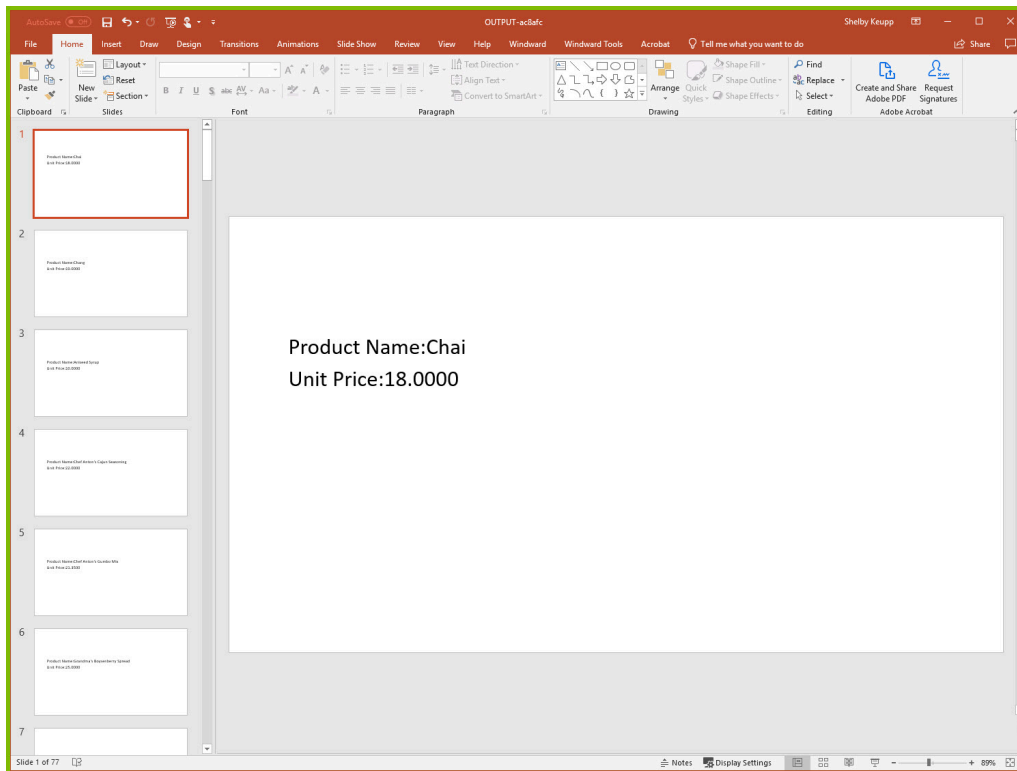
1. Save your template. You can save your template to anywhere you want on your machine and give it any name you want. Be sure to save it as a “.pptx” document.



2. In the “Windward” tab, click the “**Output**” button and from the drop down select “PPTX.”







Your template will output, and you should see a list of product names and their unit price with each product separated by a new slide.

Congratulations! You have created your first template in Windward Designer and produced your first output!

### Next Steps

Now that you have finished this introduction tutorial, here are some resources we recommend you visit next:

1. [How to connect to JSON datasources](#)
2. [How to use the XPath Wizard](#)
3. [The Windward Tutor: A collection of short video tutorials](#)
4. [Creating an Invoice in Windward Designer](#)